



KALGOORLIE

Gold and Nickel West Australian Goldfields

RIU SYDNEY RESOURCES CONFERENCE
MAY 2014

David Crook
Managing Director

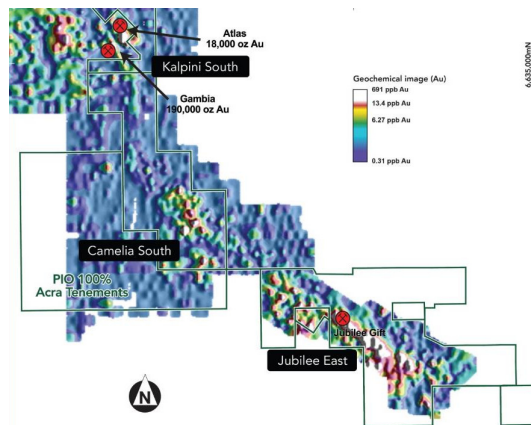
www.pioresources.com.au

Disclaimer and Competent Person's Statement

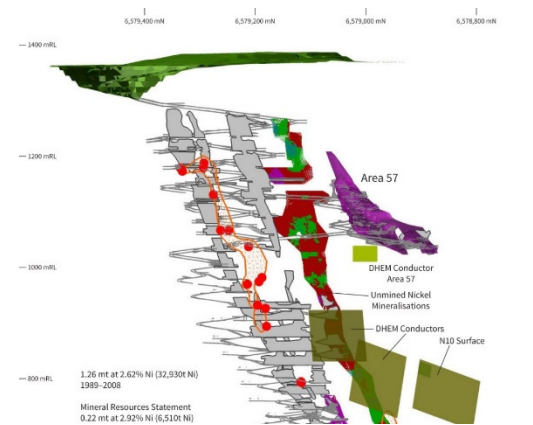
- This presentation is provided to you for the sole purpose of providing preliminary background technical, financial and other information to enable you to review the business activities of Pioneer Resources Limited (“Pioneer”).
- The material provided to you does not constitute an invitation, solicitation, recommendation or an offer to purchase or subscribe for securities.
- This presentation may contain “forward looking statements” which are made in good faith and are believed to have reasonable basis. However, such forward looking statements are subject to risks, uncertainties and other factors which could cause the actual results to differ materially from the future results expressed, projected or implied by forward looking statements.
- The information within this report as it relates to geology and mineralisation was compiled by Mr. David Crook who is a full time employee of Pioneer Resources Limited, a member of The Australasian Institute of Mining and Metallurgy (member 105893) and is a Competent Person as defined by the 2012 JORC Code, having five years experience which is relevant to the style of mineralisation and type of deposit described in the Report. This person consents to the inclusion of this information in the form and context in which it appears in this report.



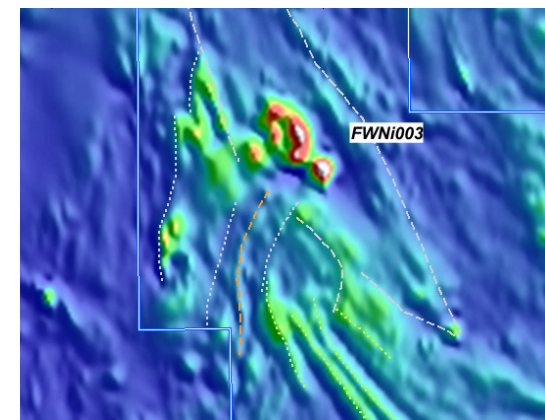
Pioneer at a Glance



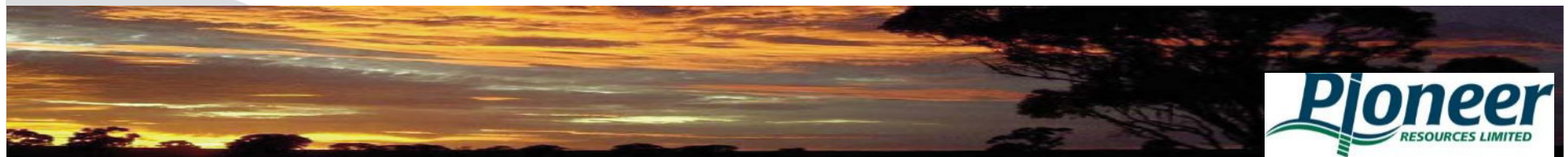
Advancing Gold exploration at the Acra Gold Project



Nickel exposure through 100% ownership of the Blair Nickel Mine



Participation within the highly prospective Albany Fraser Orogen for Nickel and Gold



A Well-Credentialed Board



Craig McGown – Chairman (Finance)

- An investment banker with over 35 years' experience consulting to companies in Australia and internationally, particularly in the natural resources sector.
- The former Chairman of DJ Carmichael and currently with New Holland Capital.



David Crook – Managing Director (Geology)

- Founding Managing Director since 2003.
- A geologist with over 30 years' experience in the mining industry, including senior exploration, mining and management roles with a number of Australian and international companies.
- 25 years experience in the Kalgoorlie District



Allan Trench – Non-Executive Director (Geophysics, Management, Academia)

- A mineral economist, geophysicist and business management consultant.
- Professor CET at UWA and Curtin Graduate Business School.
- Perth representative CRU Strategies.



Wayne Spilsbury – Non-Executive Director (Geology)

- A geologist with over 35 years of experience including 28 years with Teck Cominco Limited - former General Manager, Exploration – Asia Pacific.
- Has worked on gold and base metal projects in Western Canada, the United States, Asia and Australia.

Corporate Snapshot

FOCUSED

Western Australia-focused explorer

FUNDED

\$3.4 million in cash and receivables

ACTIVE

Financial capacity to explore and make discoveries

LEVERAGE

Good cash/Market Cap ratio

Low enterprise value

Current share price	0.9 cents
Shares on issue	553.2 million
Unlisted options	58 million
12-month range	0.8 – 3.2 cents
Cash (approx) EO March 2014	\$2.3 million
Cash receivables	\$1.1 million
Market capitalisation	\$5.0 million

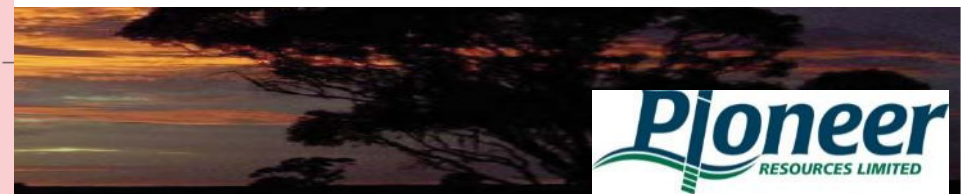


Geographic Focus Eastern Gold Fields

Eastern Gold Fields (equally Eastern Nickel Fields)

Key Projects and Locations

- Acra Gold Project
- Blair Nickel Mine
- Fairwater Nickel and Gold Project



Acra Gold Project *Pioneer's leading gold project*

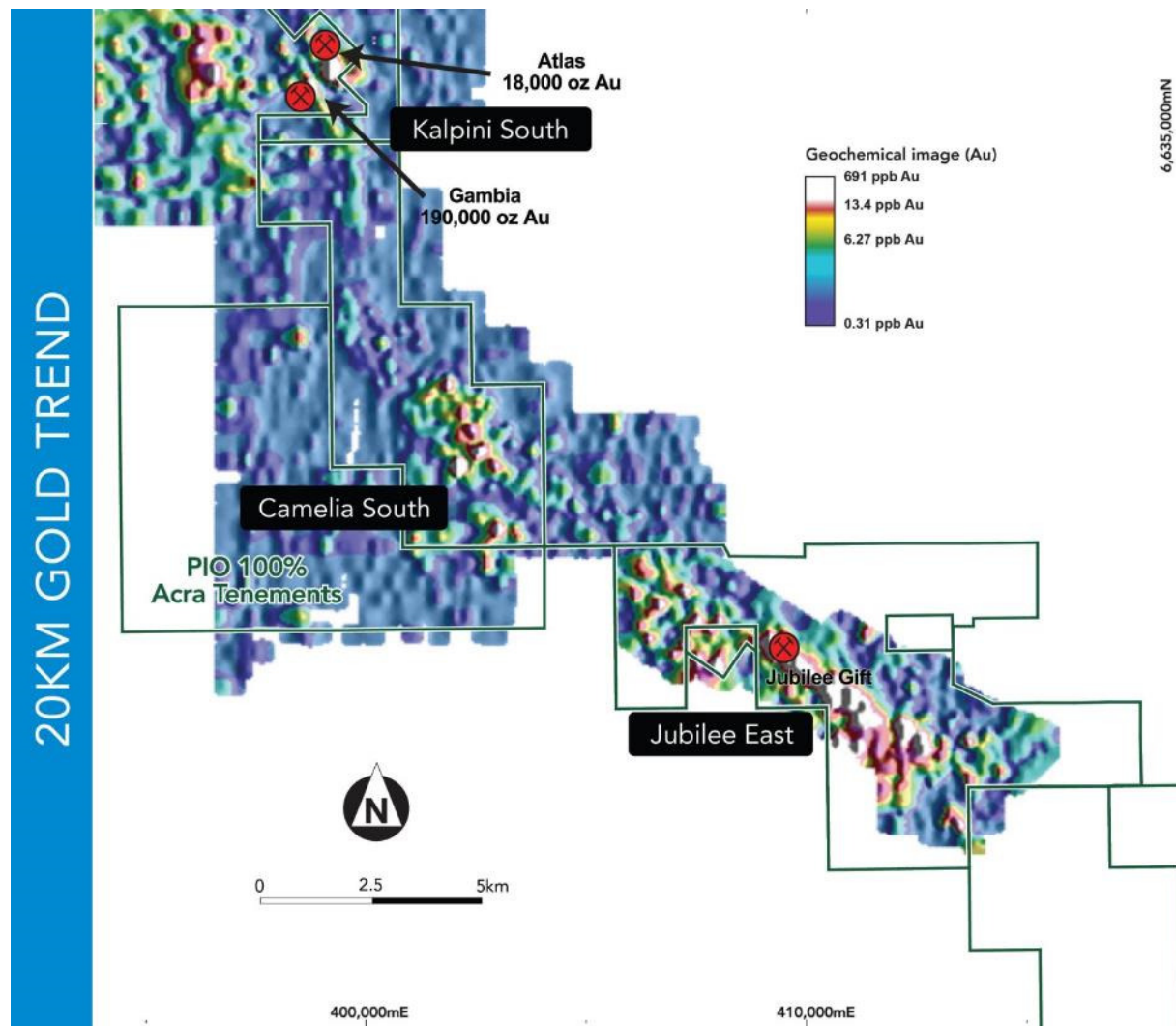
GOLD Soil Geochemistry

- Acra is Pioneer's priority gold project for 2014
- Previous "large budget" explorers have focussed on nickel during the past 20 years
- Gold data from earlier explorers has been brought into context when reviewed with modern datasets

Pioneer is the first modern explorer to hold the amalgamated project with a primary focus on gold

Acra Gold Project

continues to excite



- 2013 Drilling: 102 holes for 8,411m .
- Results confirm gold endowment.

Kalpini South:

KSRC004: 10m at 6.38g/t from 61m
KSRC005: 9m at 5.31g/t from 36m
KSRC007: 15m at 2.93 from 94m
KSRC010: 2m at 7.83 from 130m
KSRC018: 12m at 2.62g/t from 98m

Jubilee East:

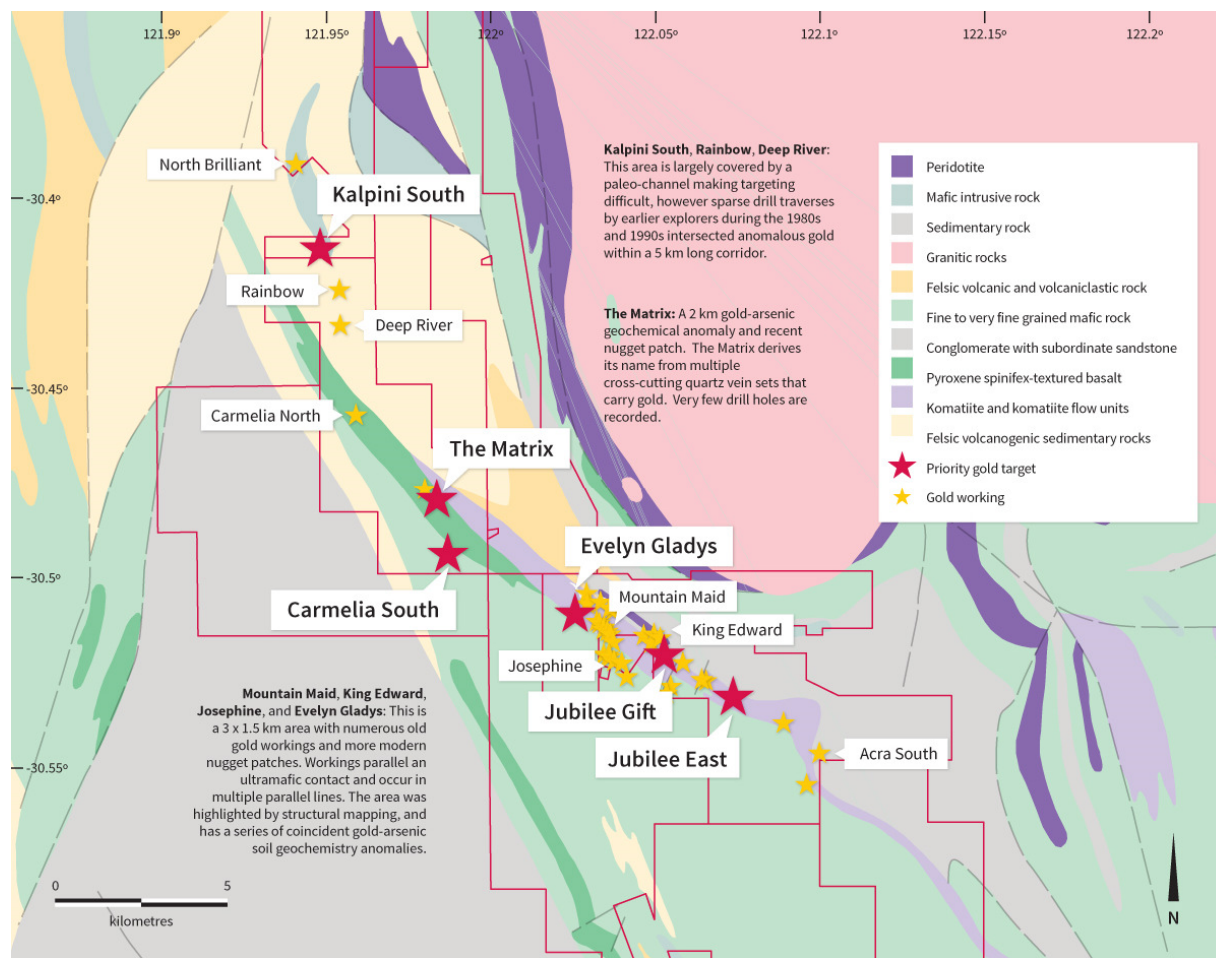
JERC002: 13m at 2.84g/t from 27m
JERC003: 2m at 12.42g/t from 57m
JERC007: 4m at 8.1g/t from 34m
JERC010: 7m at 2.6g/t from 101m
JERC038: 2m at 9.03g/t from 43m
JERC038: 8m at 2.14g/t from 52m

Camelia South - Regolith:

CSRC002: 3m at 3.68g/t from 42m
CSRC003: 3m at 4.34g/t from 45m
CSRC012: 4m at 2.48g/t from 60m

Acra Gold Project

continues to excite



- 2013 Drilling: 102 holes for 8,411m .
- Results confirm gold endowment.

Kalpini South:

KSRC004: 10m at 6.38g/t from 61m
 KSRC005: 9m at 5.31g/t from 36m
 KSRC007: 15m at 2.93 from 94m
 KSRC010: 2m at 7.83 from 130m
 KSRC018: 12m at 2.62g/t from 98m

Jubilee East:

JERC002: 13m at 2.84g/t from 27m
 JERC003: 2m at 12.42g/t from 57m
 JERC007: 4m at 8.1g/t from 34m
 JERC010: 7m at 2.6g/t from 101m
 JERC038: 2m at 9.03g/t from 43m
 JERC038: 8m at 2.14g/t from 52m

Camelia South - Regolith:

CSRC002: 3m at 3.68g/t from 42m
 CSRC003: 3m at 4.34g/t from 45m
 CSRC012: 4m at 2.48g/t from 60m

Geographic Focus: Kalgoorlie Golden Ridge Au-Ni Project



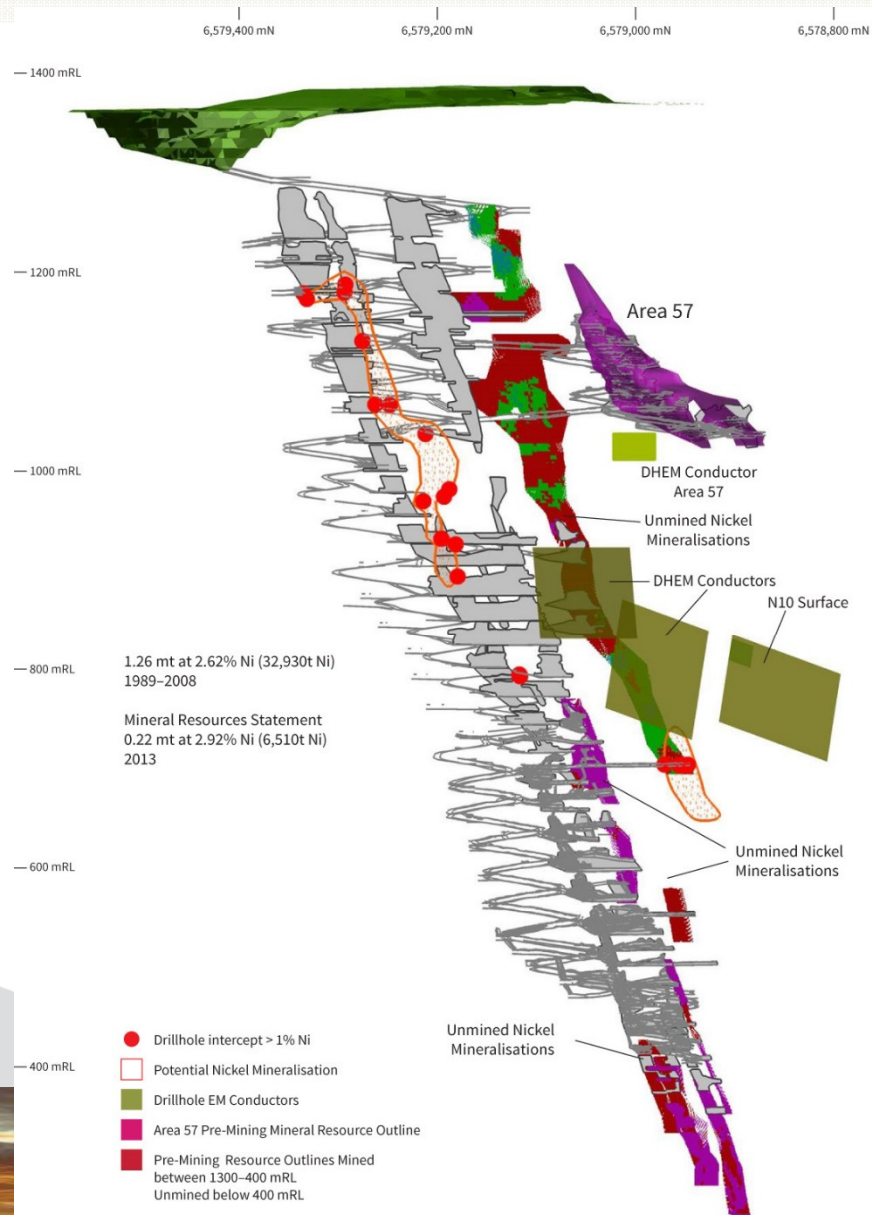
What we know...

- ✓ 20km from Kalgoorlie, 30km from Kambalda
- ✓ 100% owned by Pioneer
- ✓ Offtake agreement with BHP-B
- ✓ Mine closed due to low nickel prices in 2008

Target matrix



Mineral Resource estimate completed



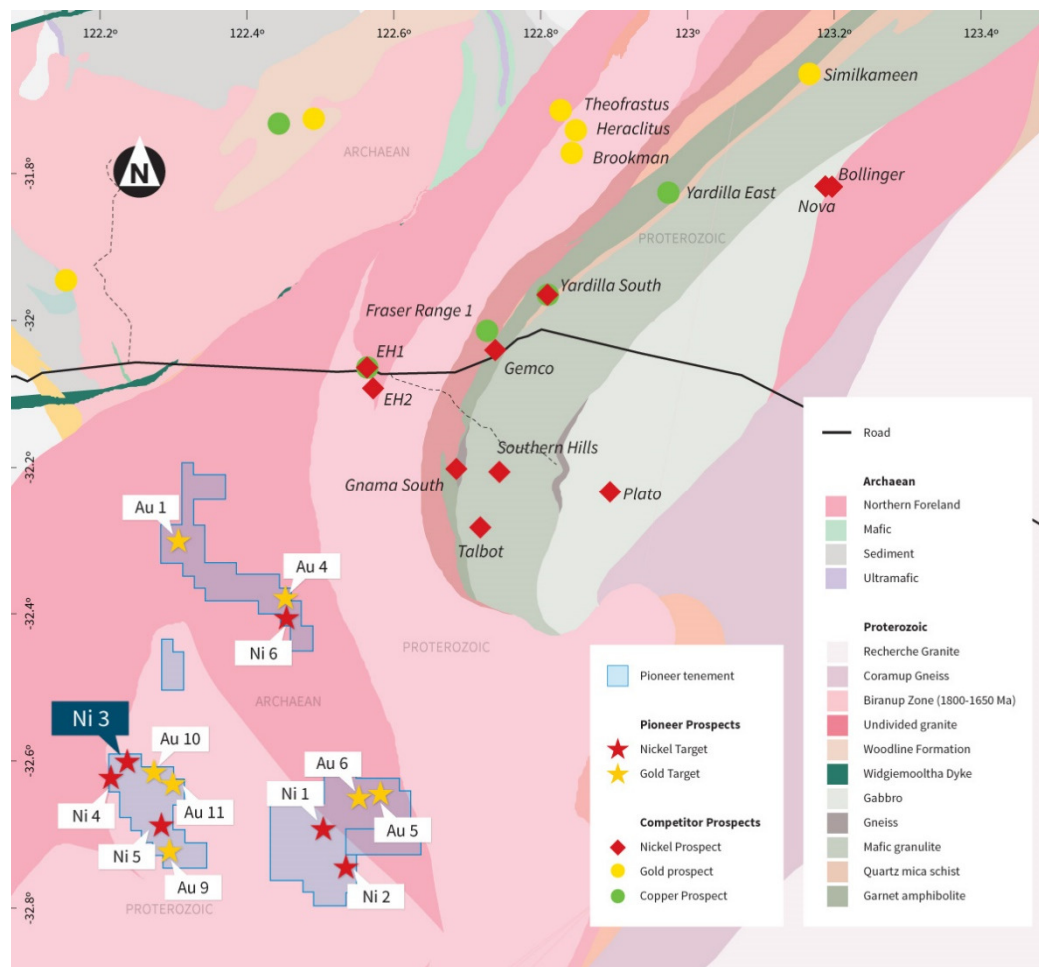
The Blair Mine...

- ✓ Mineral Resource estimate completed for the Blair Nickel Mine : 222,710t of nickel sulphide ore with a grade of 2.92% Ni
- ✓ High grade mineralisation (>4% Ni at the base of the mine development - 950m)
- ✓ Shallow drill intercepts on endowed surfaces near the mine are the focus of the expansion strategy

02 Surface Drill Intercepts

GOD018: 8.5m at 1.3% Ni
BCD049: 4.9m at 1.02% Ni
BU07-19:P 4.2m at 2.29% Ni
BU11-01 5.46m at 3.26% Ni
AMUG069: 0.98m at 6.74% Ni

Geographic Focus : Albany Fraser Fairwater Project (PIO 75%)



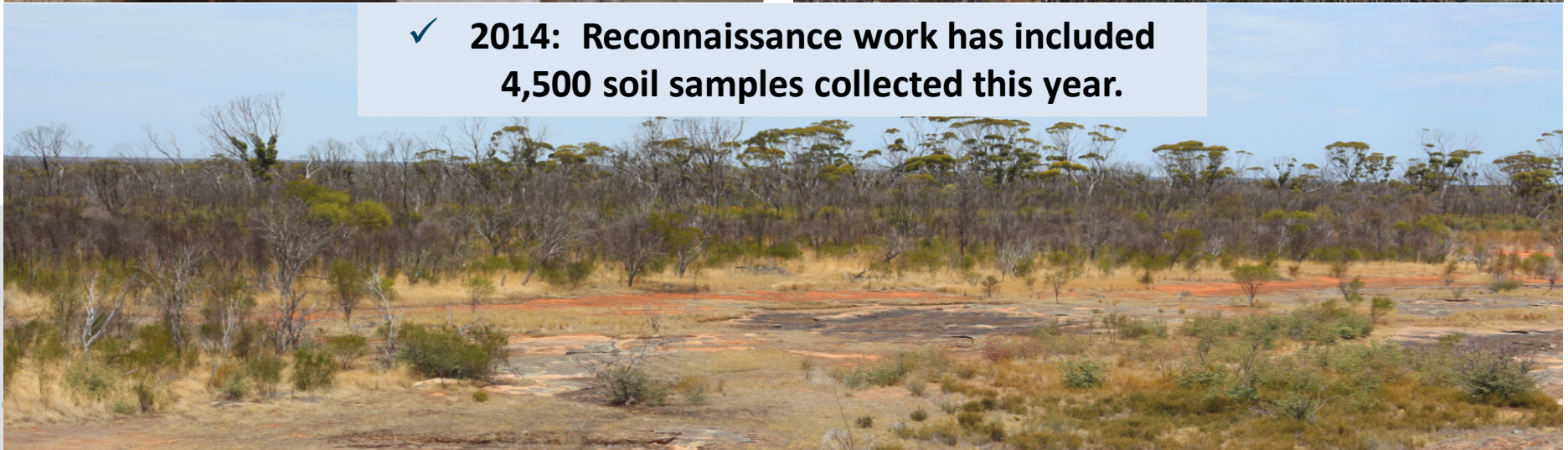
What we know...

- ✓ Ground position - 650 km²
- ✓ 105 km SW of Nova- Bollinger nickel discoveries
- ✓ Both Archean and Proterozoic Terrains
- ✓ 2013: First Geochemistry - EM drill target identified at FWNi001

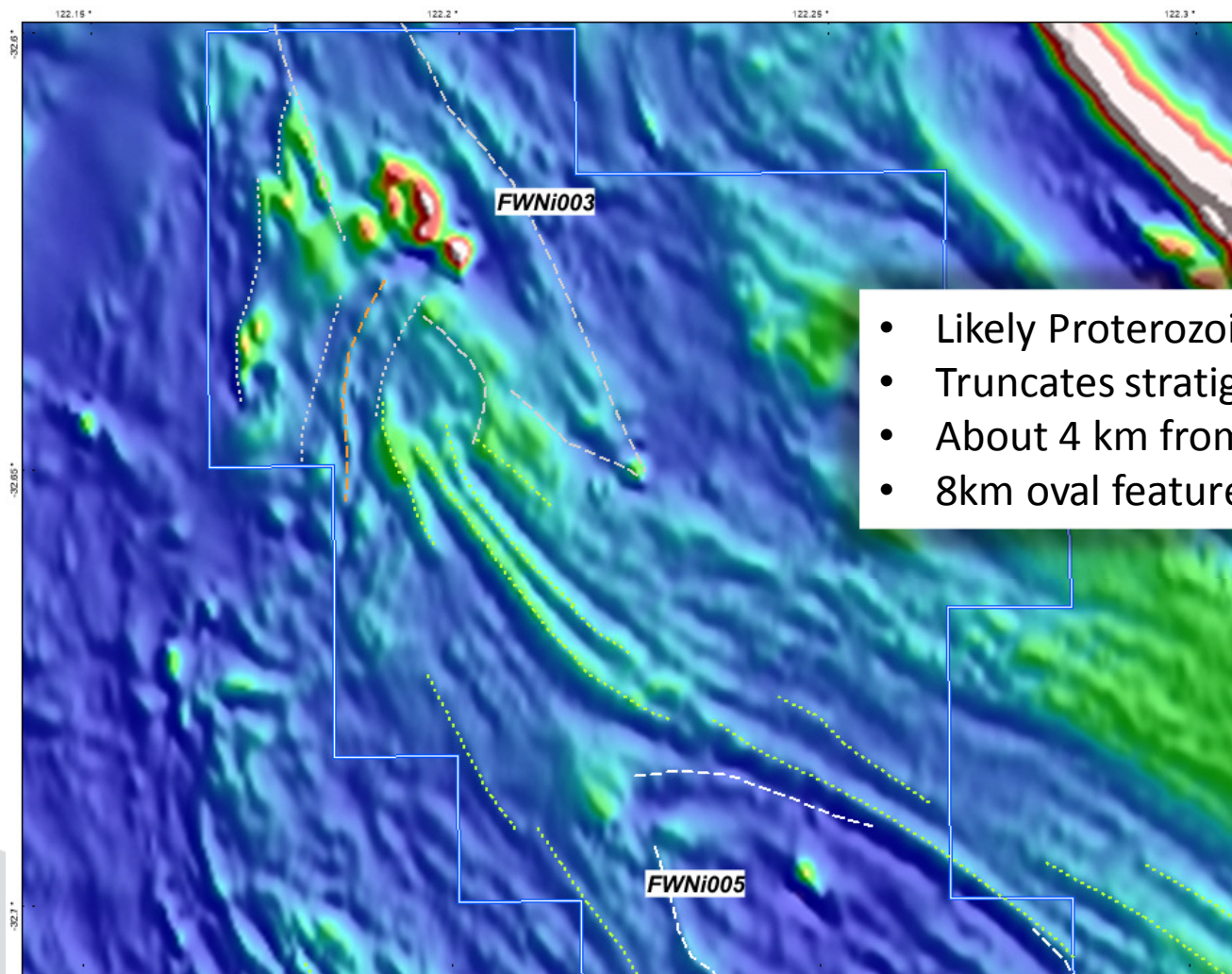
Geographic Focus : Albany Fraser Fairwater Project (PIO 75%)



✓ 2014: Reconnaissance work has included
4,500 soil samples collected this year.

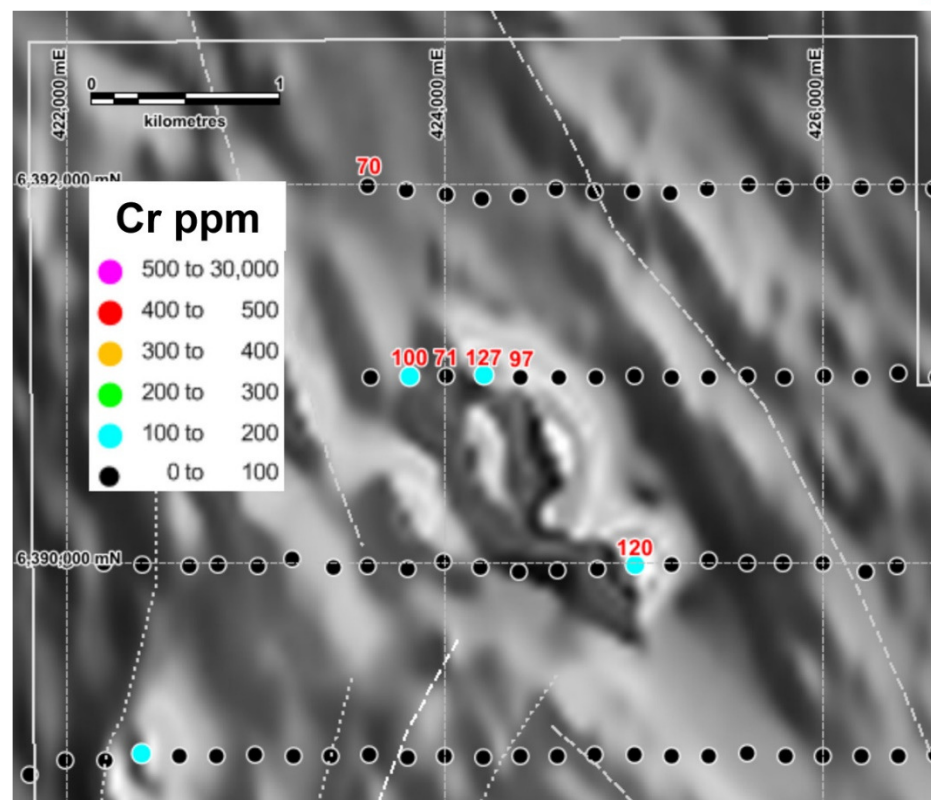
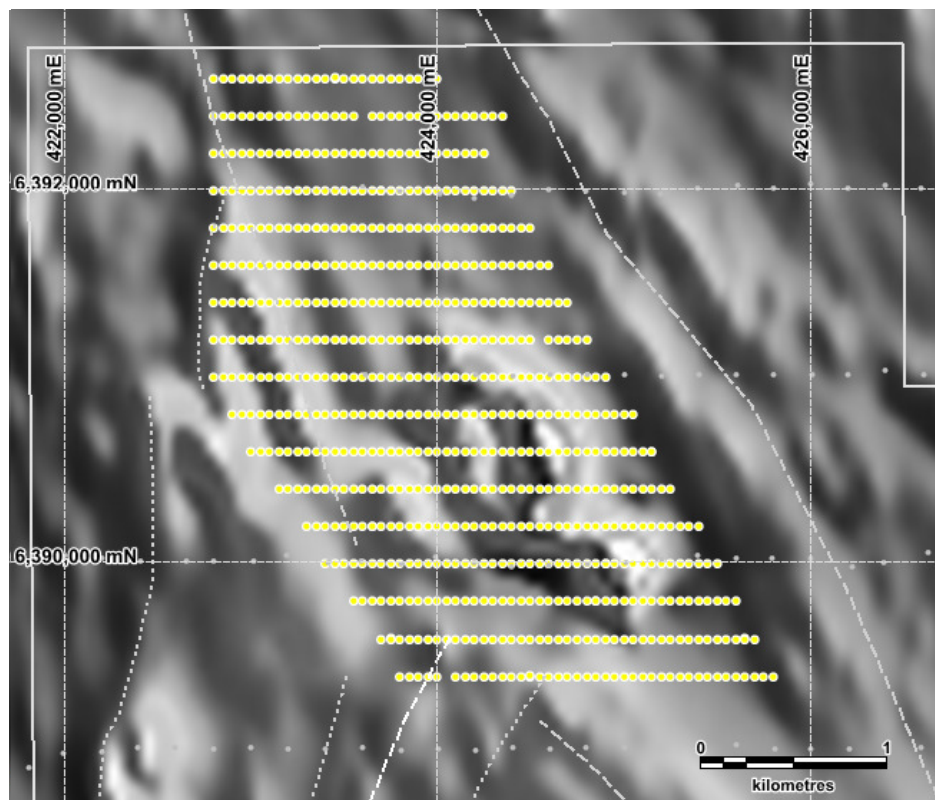


Emerging Fraser Range Nickel Prospect..... FWNi003



- Likely Proterozoic age (GSWA age dates)
- Truncates stratigraphy – suggests intrusive.
- About 4 km from a major regional structure.
- 8km oval feature (Nova 5km – same scale).

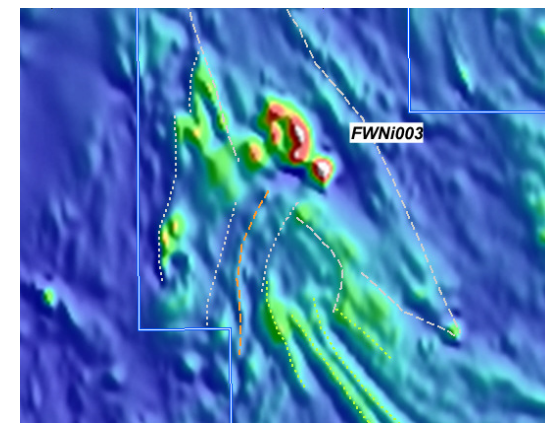
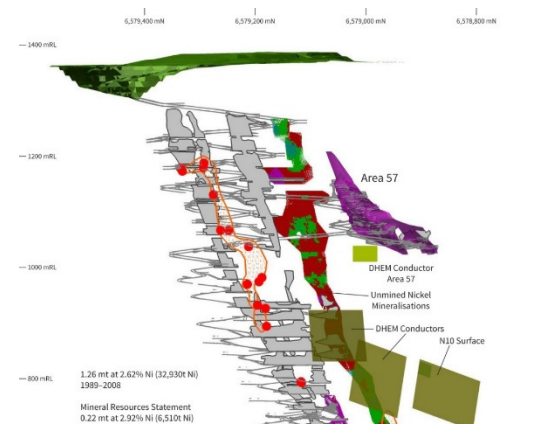
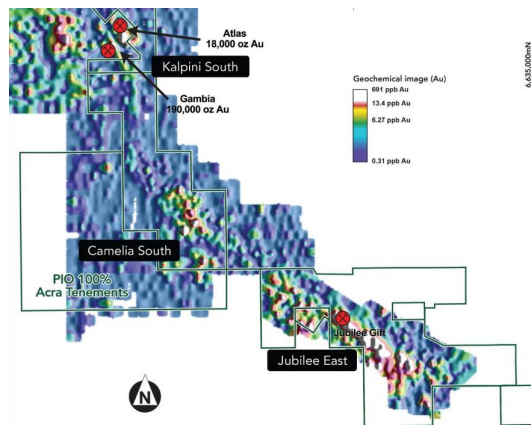
Emerging Fraser Range Nickel Prospect..... FWNi003



Aeromagnetic Image with pre-Pioneer Auger Geochemistry

698 Soil samples taken this year

Scheduled Work and News Flow



September 2014 quarter:
10,000m aircore and RC
drilling testing targets
between Jubilee Gift and the
Matrix

On-going:
Increase resource base
towards the targeted
20,000t Ni metal; and
Look at development
alternatives

September Quarter:
Grant of key tenements;
Compile soil geochemistry;
Complete EM surveys;
Then:
Commence drilling the
ensuing targets



Pioneer at a glance

■ FOCUSED

- Projects within the world class Eastern Gold (and Nickel) fields

■ FUNDED

- \$2.3 million cash now and \$1.1 million receivable in March 2015

■ ACTIVE (but very mindful of our cash)

- ACRA gold project
 - A conventional goldfields Gold Project warehoused by base metal explorers
- BLAIR NICKEL MINE and nickel sulphide project
 - An established Project which sets the Company for an improving Nickel price
- FAIRWATER nickel and gold Project
 - A project with high reward potential in WA's hottest location, the Albany-Fraser Orogen

