



25 October 2007

ASX/MEDIA ANNOUNCEMENT

SEPTEMBER 2007 QUARTERLY REPORT

Positive Results From Golden Ridge and Drilling Scheduled for Ravensthorpe

Pioneer Nickel Limited (ASX: PIO) is pleased to announce details of progress made with drilling at three of its projects during the September 2007 quarter. Approximately 20,000 metres of drilling was completed at the Company's Golden Ridge JV Project (Farm-in Nickel), the Silver Swan Northwest (100% Pioneer) and Balagundi Projects (100% Pioneer), delivering significant results from each.

Pioneer Managing Director, Mr David Crook, said the Company had set itself a number of objectives for the September quarter.

"Our primary objectives were to generate new nickel sulphide targets at the Golden Ridge JV Nickel Project (with Australian Mines Limited ASX: AUZ) and to secure permits to get drilling at the Ravensthorpe Copper-Gold JV Project with Galaxy Resources Limited (ASX: GXY). We are pleased to have achieved both," said Mr Crook.

"A 13,000m aircore drilling program, completed at Golden Ridge, tested prospective basal ultramafic contacts and has identified at least four new target zones. Follow-up programs will now be put into place to test these targets," he said.

Very encouraging metallurgical test results for three samples of copper-gold mineralisation from the Mt Desmond Deposit were also returned. The tests produced a 'saleable' concentrate yield of 22% copper and 10g/t gold with recoveries of 92% and 85% respectively.

In the coming months Pioneer will undertake a drilling program to test for extensions to known ore shoots beneath the Mt Desmond Mine which, if successful, could result in an economic assessment for the mine to be re-opened.

"We are very keen to resume drilling at Mt Desmond, which remains the top priority prospect within our portfolio," said Mr Crook. "We believe the prospect has the potential to generate early cash flows from reserves of gold and copper mineralisation, and we expect to be able to fast track the project as the key mining lease is already granted, and much of the required infrastructure is in place at Ravensthorpe.

"However while we have been waiting to get onto the ground at Ravensthorpe we brought forward grassroots exploration programs for the Silver Swan Northwest and Balagundi Projects, which has immediately generated some very interesting results," said Mr Crook.

"The positive results received during the period have helped to significantly advance each of these projects and have provided a solid basis for follow up programs," he said. "We look forward to announcing the results of these programs throughout the rest of the year."

– ENDS –

For more information please contact:

David Crook
Pioneer Nickel
Managing Director
(08) 9322 6974

dcrook@pioneernickel.com.au
Web: www.pioneernickel.com.au

Ann Nahajski
Porter Novelli
(08) 9386 1233
0400 205 433

anahajski@wa.porternovelli.com.au





ABN 44 103 423 981

25 October 2007

ASX RELEASE

QUARTERLY REPORT FOR THE PERIOD ENDING 30 SEPTEMBER 2007

Pioneer Nickel Limited (ASX: PIO) is pleased to provide to shareholders the September 2007 Quarterly Activities Report, which provides a summary of the progress made by your Company.

During the quarter the Company completed programs totalling nearly 20,000m of drilling on three of its four active projects. While at the end of the quarter the Company is still waiting on assay results for over 3,000 samples, those returned have significantly advanced the projects and have provided a solid basis for follow up programs going forward.

KEY ACHIEVEMENTS SEPTEMBER 2007 QUARTER

Exploration:

The Ravensthorpe JV Project (10km SE of Ravensthorpe. Farm-in Copper-Gold).

- Excellent results returned from 3 metallurgical samples. Cleaner test recoveries were in excess of 92% for copper and 85% for gold, yielding a 'saleable' concentrate of 22% copper and 10g/t gold;
- Drilling underneath Mt Desmond Mine scheduled to commence in late October 2007.

The Golden Ridge JV Project (30km SE of Kalgoorlie. Farm-in Nickel).

- Pioneer has now **earned a 51% Interest** in the project;
- 13,031m of aircore drilling completed targeting basal ultramafic contact positions;
- Results included: 2m at 0.47% Ni, 438ppm Cu; 11m at 0.51% Ni, 375ppm Cu; and 3m at 0.57% Ni, 1,491ppm Cu;
- 204m of RC and 1,275m of diamond drilling completed.

The Silver Swan Northwest Project (50km NE of Kalgoorlie. 100% Pioneer, Nickel-Gold)

- 155 RAB holes completed for 6,034m.

The Balagundi Project (20km E of Kalgoorlie. 100% Pioneer, Copper-Lead-Zinc)

- 10 RC holes completed for 1,225m;
- 2 holes intersected significant malachite mineralisation.

The Aerodrome JV Project (5km W of Ravensthorpe. Farm-in Nickel)

- 305 soil samples taken, returning coincident Ni-Cu and PGE anomalism.

The Ramelius Alliance Area (70km SW of Kalgoorlie. Farm-out Nickel-Gold)

- 523 RAB holes completed at the Wattle Dam Nickel Project;
- Results included 18m at 0.77% Ni;
- 14 RC holes completed for 1,650m at Larkinville West JV Project.

Corporate:

- At 30 September 2007, the Company had cash reserves of \$2.6 million, available for sale investments with a market value of \$0.9 million (including 1.3 million shares in Galaxy Resources Limited), receivables of \$0.2 million and no debt.



1 RAVENSTHORPE DISTRICT

- *Western Copper Pty Limited (a wholly owned subsidiary of Pioneer) 75% interest in the Ravensthorpe Copper-Gold Project, Galaxy Resources Limited (“Galaxy”) 25% contributing interest. The project covers the historical Mt Desmond and Elverdton Mines as well as ground prospective for volcanogenic massive sulphide deposits.*
- *Western Copper Pty Limited also has a 100% interest in additional tenements in the Ravensthorpe District prospective for copper and gold.*
- *Pioneer has the right to earn a 75% interest in the Aerodrome Nickel Project from Galaxy through sole funding exploration expenditure totalling \$0.5 million. The project is prospective for massive nickel sulphide mineralisation.*

PROJECT STATUS

Mt Desmond–Elverdton Project

An update to the Mt Desmond-Elverdton geological model was completed in preparation for drilling. The model includes data from mine geology, stope information and assays, as well as drilling results from the June quarter. The interpretation has copper-gold ore present in a number of high grade, north-plunging shoots. In keeping with the Company’s “Dry Soil” policy to avoid transmitting Die-Back fungus, no drilling was undertaken on the project during the September quarter.

Copper – Gold Extractive Metallurgy

Final results were received from metallurgical test work completed on three samples of copper-gold mineralisation from RC samples from the northern end of the Mt Desmond workings. The test work was supervised by Independent Metallurgical Operations Pty Ltd of West Perth.

A summary of the test results is provided in Table 1.

| | Composite 1 (Moderate Grade) | | Composite 2 (Moderate Grade) | | Composite 3 (Low Grade) | |
|----------------------|---|-------------|---|-------------|------------------------------------|-------------|
| | Copper | Gold | Copper | Gold | Copper | Gold |
| Head Grade | 2.32% | 2.28g/t | 2.35% | 1.51g/t | 1.44% | 0.28g/t |
| Concentrate Recovery | 91.9% | 86.3% | 93.4% | 82.0% | 91.8% | 84.7% |
| Concentrate Grade | 24.5% | 12.5g/t | 22.3% | 8.82g/t | 18.8% | 4.77g/t |

- *All tests were carried out at a grind size of 80% passing 75µm*
- *Analysis by AMMTEC Mineralogical Services*

A summary of the metallurgical data interpretation included:

- Mineralogy and recovery rates indicate that a high percentage of the copper is present as liberated grains of chalcopyrite or chalcopyrite-rich composites;
- Good agreement between calculated head grades and reconciled grades for each of the tests gives a high degree of confidence in the results obtained;
- A saleable grade copper concentrate with low penalty elements can be readily achieved, with copper recoveries in the vicinity of 90%, by standard flotation processes; and
- In the final concentrates, common penalty elements, including lead, arsenic, antimony bismuth, mercury and fluorine, were found to be at levels well below common penalty thresholds.

These results have provided the joint venture partners with the confidence to commit a substantial budget for the next round of drilling. Routine metallurgical testing will be conducted on core samples on an on-going basis, to provide data for a pre-feasibility study.

Project Scale Geological Mapping and Geochemistry

Detailed field geological mapping of prospect areas within the Ravensthorpe JV Project was undertaken and is currently being compiled.

An infill soil sampling program was completed around the FED workings 5km N of the Mt Desmond Mine to follow up a number of previously generated copper-gold anomalies. Resulting targets will be drilled when Program of Work permits are received.

Aerodrome Joint Venture Project Soil Geochemistry

A 305 sample, reconnaissance scale, soil geochemistry program was completed covering ultramafic sequences in the southern part of the Aerodrome JV Project area. Coincident nickel-copper-PGE zones were identified adjacent to magnetic highs warranting further work.

Final interpretation reports were received from the Company's consultant geophysicist for the VTEM and Moving Loop electromagnetic surveys completed earlier this year. Work has commenced on ranking the anomalies and planning drilling programs.

KEY OBJECTIVES DECEMBER 2007 QUARTER

Mt Desmond Copper-Gold Prospect Drilling

Drilling is scheduled to resume during late October 2007, and will test for extensions to ore shoots beneath the old Mt Desmond Mine which, if successful, could result in an economic assessment for the mine to be re-opened. A series of holes will target the mineralised structure between 100m and 200m below the old mine, which was worked to between 180m and 230m below surface.

The initial program is approximately 3,500m of RC and 2,000m of diamond drilling and is expected to be completed during the December quarter. Clearing Permits have already been received, which provide for drilling to continue without delay following the receipt of encouraging results.

Drilling will also test the satellite PLP and Ironclad Prospects. Successful results will provide the catalyst for a major exploration and resource definition program within the project area.

Aerodrome Nickel Project Drilling

Drilling will also be undertaken on nickel sulphide targets located on the Aerodrome JV tenements once landholders complete cropping.

Regional Ferrous Metal Potential

Pioneer has commenced reconnaissance scale work to evaluate the ferrous metal potential of the Ravensthorpe Ranges. There are a number of known occurrences of iron and manganese within the Ravensthorpe District, including JV tenements.

- An old adit north of Mt Desmond within M74/163 intersected a manganese deposit that was chip sampled during the 1980s, returning 17m at 22% MnO. Visual examination suggests the mineralisation is likely to be pyrolusite.
- AT Acton and WP Coleman ("A&C") explored for iron ore throughout the district between 1963 and 1969. Work completed included rock chips and shallow drilling which identified 14 "Iron Ore Deposits." A description of the Ravensthorpe Range 2A deposit includes: "a mixture of goethite, haematite, magnetite and non-crystalline goethite, with goethite predominating." (A&C March 1966). Assays were carried out at Whyalla SA, Kalgoorlie School of Mines and in Japan. It is reported that "Assays for goethite and haematite range between 58% and 64% Fe" (A&C Jan 1965).

An informal "Exploration Alliance" has been established with Traka Resources Ltd, Tectonic Resources NL and the JV. The aggregate tenement holding covers over 30 strike kilometres of prospective ground within the Ravensthorpe Ranges.

Although the Exploration Alliance relates to exploration only and does not contemplate shared ownership of resources, continued cooperation in relation to exploration will provide mutual benefits. Each party will separately fund its own exploration costs but will share and coordinate programs to secure drill rigs, minimise mobilisation and logistics costs as well as remove the artificial constraints imposed by the complex tenement holdings.

2 GOLDEN RIDGE JOINT VENTURE PROJECT

- The Golden Ridge JV Project is located 34km SE of Kalgoorlie.
- Pioneer 51% and can earn up to 80% in the project from Australian Mines Limited.

The Golden Ridge JV Project provides Pioneer with access to 100 km² of tenements that cover the very prospective Golden Ridge Ultramafic Unit, host to the Blair Nickel Mine and other nickel mineralisation including Blair South, Area 20A, Marshall, Duplex Hill. The Blair Mine is excluded from the JV.

PROJECT STATUS

Project Equity

During the quarter Pioneer achieved a significant milestone by completing its stage one expenditure commitment and thereby earning a 51% interest in the project. AUZ now has the right to elect to contribute to ongoing exploration on a pro-rata basis or dilute and allow Pioneer to sole fund the next \$3 million to increase its participating interest to the next decision point, being 70% of the project.

Reconnaissance Drilling

The Company continued its new-target generation program, using reconnaissance drilling to test prospective ultramafic contacts that are obscured by sand cover. A further 176 holes for 13,031m were completed during the quarter testing the Penglaze Dam East contact. Assays from RAB drilling completed during the June 2007 quarter were also returned. Significant results are listed in Table 2 below.

Four new target areas, T1 – T4, shown on Figure 3, are evident based on nickel and copper geochemistry. These targets will be the focus of further testing by Pioneer using SQUID fixed loop EM (“FLTEM”) surveying and RC drilling. The targets are all on, or close to, interpreted basal ultramafic rock contacts that elsewhere have known nickel sulphide occurrences.

| Table 2 Golden Ridge JV Project Reconnaissance Drilling: Significant Results | | | | | | | |
|---|----------|-----------|----------|--------|---------------|--------|----------|
| Hole ID | East (m) | North (m) | From (m) | To (m) | Intercept (m) | Ni (%) | Cu (ppm) |
| RAB Drilling: Blair-Blair South Zone | | | | | | | |
| GRB0014 | 377,483 | 6,578,782 | 5 | 10 | 5 | 0.47 | 559 |
| GRB0021 | 376,946 | 6,578,220 | 55 | 62 | 7 | 0.41 | 304 |
| GRB0022 | 376,977 | 6,578,230 | 19 | 26 | 7 | 0.53 | 486 |
| GRB0146 | 376,856 | 6,578,403 | 14 | 16 | 2 | 0.28 | 356 |
| GRB0157 | 376,463 | 6,579,185 | 33 | 52 | 19 | 0.34 | 184 |
| GRB0168 | 376,641 | 6,578,915 | 43 | 47 | 4 | 0.53 | 902 |
| Aircore Drilling: Penglaze Dam East Zone | | | | | | | |
| GRA0030 | 375,636 | 6,579,729 | 63 | 76 | 13 | 0.32 | 235 |
| GRA0040 | 375,810 | 6,579,363 | 58 | 62 | 4 | 0.29 | 637 |
| GRA0057 | 375,895 | 6,578,764 | 40 | 42 | 2 | 0.47 | 438 |
| GRA0064 | 375,997 | 6,578,377 | 48 | 59 | 11 | 0.69 | 88 |
| GRA0075 | 375,597 | 6,577,857 | 90 | 110 | 20 | 0.30 | 170 |
| GRA0090 | 376,348 | 6,577,852 | 72 | 76 | 4 | 0.26 | 2,681 |
| GRA0091 | 376,420 | 6,577,869 | 35 | 59 | 24 | 0.38 | 311 |
| GRA0103 | 376,529 | 6,577,485 | 45 | 83 | 38 | 0.29 | 186 |
| GRA0107 | 376,411 | 6,577,249 | 45 | 51 | 6 | 0.30 | 251 |
| GRA0119 | 376,605 | 6,576,887 | 38 | 48 | 10 | 0.31 | 386 |
| GRA0120 | 376,680 | 6,576,910 | 35 | 76 | 41 | 0.35 | 339 |
| including | | | 35 | 38 | 3 | 0.57 | 1,491 |
| GRA0127 | 376,659 | 6,576,690 | 56 | 67 | 11 | 0.51 | 375 |

- Hole positions by GPS pickup in MGA94-51 grid coordinates.
- Assays were completed by Genalysis Laboratory Services Pty Ltd, using a 4 acid digest and ICP-OES finish.
- Intercepts are “down-hole” metres. No estimate regarding true thickness is made or implied.

RC and Diamond Drilling

Drilling comprising 204m of RC and 1,275m of diamond core tested a number of targets generated in the previous quarter. Unfortunately no significant results were returned.

KEY OBJECTIVES DECEMBER 2007 QUARTER

Moving Loop EM (“MLTEM”) surveys will be conducted over targets T3 and T4.

Five SQUID FLTEM surveys were completed during the June 2007 quarter. One anomaly, located immediately NE of T1, is of interest. This conductor is evident as a very late time feature offset from a nearby regional conductor. A detailed EM survey is required to better resolve a drill target.

RC drilling programs will continue to target known mineralisation, testing for the presence of high-grade ore. Drill holes also act as DHTEM platforms which will facilitate the location of massive nickel sulphide mineralisation, if present, near the drill hole.

Reconnaissance aircore drilling will also continue along southern ultramafic belts to generate more exploration targets.

3 SILVER SWAN NORTHWEST PROJECT

- *The Silver Swan Project is located 70km N of Kalgoorlie.*
- *Pioneer has a 100% interest in the project.*

PROJECT STATUS

The project has an area of 442km², covering a sequence of ultramafic and mafic units, intruded by granites, which are considered prospective for nickel sulphide and gold mineralisation.

The project has received little exploration activity during the past 10 years, when preliminary evaluations were last conducted for both nickel and gold. Results, while encouraging, were not followed up at the time.

The project excludes the Silver Swan Northwest JV Project with BHP Billiton Limited.

Reconnaissance Drilling for Gold

Pioneer completed 155 RAB holes for 6,034m of drilling to test structural targets within a 12km long, gold-in-soil geochemical zone. Gold anomalism straddles the sheared greenstone contact with an intrusive granite.

Granite-hosted gold has been mined at the Federal and Golden Cities Deposits, which are located 17km SW of the project. Gold was also mined at Mulgarrie and Gordon-Sirdar, within sheared greenstones, SE along strike.

Holes were drilled on traverses either 400m or 200m apart and spaced approximately 80m apart along the lines. Approximately half of the assays for samples submitted have been received from the program. Significant results are listed in Table 3 below.

| Hole ID | Easting (m) | Northing (m) | Depth (m) | Dip | Azimuth | From (m) | To (m) | Interval (m) | Au (g/t) |
|-----------|-------------|--------------|-----------|-----|---------|----------|--------|--------------|----------|
| SSB0022 | 349,479 | 6,654,805 | 40 | -60 | 270 | 38 | 40eoh | 2 | 0.65 |
| SSB0051 | 350,362 | 6,654,400 | 35 | -60 | 270 | 26 | 35eoh | 9 | 0.19 |
| SSB0086 | 350,290 | 6,653,995 | 40 | -60 | 270 | 30 | 40eoh | 10 | 0.24 |
| including | | | | | | 38 | 40 | 2 | 0.95 |

- *Hole positions by GPS pickup in MGA94-51 grid coordinates.*
- *Assays were completed by Genalysis Laboratory Services Pty Ltd, using a 4 acid digest and ICP-OES finish.*
- *Intercepts are “down-hole” metres. No estimate regarding true thickness is made or implied.*

The results are encouraging given the broad spacing of the drilling and the large area of anomalous auger geochemistry to test. There is a strong correlation between the anomalous gold geochemistry from drilling and geological structures evident in aeromagnetic imagery.

Target Generation for Nickel

A thorough review of existing data for the prospective Highway Ultramafic Unit, which runs through the western side of the project area, has commenced. Outside the project this unit hosts the Scotia and St Patrick's nickel sulphide deposits as well as a number of other nickel sulphide occurrences.

This review has already identified a number of targets where coincident nickel and copper anomalism occurs near the interpreted basal contact of ultramafic rocks.

KEY OBJECTIVES DECEMBER 2007 QUARTER

Compilation of the latest drill results will be completed ahead of infill drilling over anomalous areas.

A MLTEM survey has been booked to test nickel targets.

Pioneer's consultant geologist is completing an aeromagnetic interpretation and targeting assignment over the project in order to generate the next round of drill targets.

4 BALAGUNDI PROJECT

- *The Balagundi Project is located 20km E of Kalgoorlie.*
- *Pioneer (through Western Copper Pty Limited) has a 100% interest in the project.*

PROJECT STATUS

The Balagundi Project comprises three exploration licences and seven prospecting licences, totalling 123km² and has a geological setting which is considered by Pioneer's geologists as consistent with that hosting volcanogenic massive sulphide deposits. This target style includes Golden Grove and Teutonic Bore Mines as Western Australian examples.

Earlier exploration by nickel explorers in the 1970s and gold explorers in the 1990s identified a number of copper and zinc anomalies in rock chip sampling and drilling. These were not followed up at the time as gold was the commodity being sought.

During the quarter the Company purchased multi-client aeromagnetic data and aerial photography coverage over the project to complement a large geochemical data set received for the project.

Reverse Circulation Drilling for Copper

Pioneer completed 10 RC drill holes for 1,225m to test the Trapdoor Prospect located in the central part of the project area. The drilling intersected a sequence of siltstone and shales. Two of the drill holes intersected zones of malachite (copper carbonate) mineralisation which returned significant assay results. These are listed in Table 4 below.

The structural complexity of the Trapdoor Prospect became evident when the mineralised geological unit was not intersected in the subsequent holes drilled. Detailed correlation of the geology between the sections is currently in progress.

Auger Geochemistry

The remainder of the Balagundi Project has now been sampled by auger on a 400x80m pattern. The samples have been despatched to ACME laboratories in Canada for analysis.

Following a recommendation from the Company's consulting geochemist, auger pulps from earlier surveys were submitted to the same laboratory for detailed pathfinder element analysis.

| .Table 4 Significant RC Drilling Results: Balagundi Project | | | | | | | | | |
|--|-------------|--------------|-----------|-----|---------|----------|--------|--------------|--------|
| Hole ID | Easting (m) | Northing (m) | Depth (m) | Dip | Azimuth | From (m) | To (m) | Interval (m) | Cu (%) |
| BGR003 | 377,911 | 6,607,550 | 100 | -60 | 090 | 35 | 37 | 2 | 0.58 |
| and | | | 100 | -60 | 090 | 50 | 56 | 6 | 0.70 |
| including | | | | | | 51 | 52 | 1 | 1.06 |
| BGR004 | 377,911 | 6,607,508 | 100 | -60 | 090 | 50 | 51 | 1 | 2.97 |
| and | | | 100 | -60 | 090 | 59 | 62 | 3 | 0.87 |

- Hole positions by GPS pickup in MGA94-51 grid coordinates.
- Assays were completed by Genalysis Laboratory Services Pty Ltd, using a 4 acid digest and ICP-OES finish.
- Intercepts are "down-hole" metres. No estimate regarding true thickness is made or implied.

KEY OBJECTIVES DECEMBER 2007 QUARTER

Pioneer has engaged a consultant geologist to complete an aeromagnetic interpretation and targeting assignment over the project in order to generate new drill targets.

5 RAMELIUS ALLIANCE AREA

WATTLE DAM PROJECT

- Pioneer 80% of nickel rights.

WEST LARKINVILLE- PROJECT

- Pioneer 25% of gold rights and 20% of nickel rights
- Ramelius Resources limited hold the balance of the equity the both projects

Ramelius has completed a 14 hole RC drilling program totalling 1,650 m to follow up anomalous RAB results from the Larkinville West Project, including 32m at 2.0g/t Au and 4m at 1.4g/t Au from a zone approximately 300m long within a sequence of biotite schists. No results from the RC drilling have been received.

In addition Ramelius have completed 523 RAB holes within the Wattle Dam Project testing a number of nickel and gold targets. Approximately 30% of the assay results have been received, and these included a significant nickel intersection identified in hole SRR0240 which returned 18m for 0.77% Ni from 16m, including 4m at 1.1% Ni from 24m.

6 ACRA JOINT VENTURE PROJECT

- The Acra Project is located approximately 75km NE of Kalgoorlie.
- Jubilee Mines NL ("Jubilee") holds a 60% interest and is earning a 75% interest in the project.

Results of a 3,890 metre aircore drilling program completed during the June 2007 quarter failed to return any significant assay results. The best assay was 302 ppb in aircore hole SDAC030.

Soil sampling was completed over the Tassie Well Zinc Prospect (E31/579) with total of 2,514 samples (-250um fraction) collected on a 400x40m grid. Evaluation of results has resulted in the identification of sixteen Pb-Zn+/-Ag+/-Cd anomalies. Of these, four are considered high priority, four medium and the remainder low order anomalies. The high priority anomalies will be field checked during the December quarter.

A soil sampling program was completed on tenement E27/273 with 4,003 samples (-250um fraction) collected on a 400x40m grid. Assay results are still outstanding.

Pioneer Nickel Limited
September 2007 Quarterly Report – Operations Summary

Jubilee has notified Pioneer that a drilling program has been scheduled to commence during the December 2007 quarter. The drilling is planned for the Jubilee (JSW Gossan) prospect area and will include both RC percussion and diamond drilling.

A MLTEM and a number of SQUID FLTEM surveys are also scheduled for the December 2007 quarter. The MLTEM survey will be carried out immediately NW and along strike of the Jubilee (JSW Gossan) prospect. The SQUID FLEM surveys will be carried out over the Jubilee (JSW Gossan) prospect as well as a number of small surveys at the Acra prospect targeting the southern ultramafic contact.



David Crook
Managing Director

The information within this report as it relates to geology and mineralisation was compiled by Mr David Crook (which includes information provided by other third parties for this report). Mr Crook is a full time employee of Pioneer Nickel Limited, is a Member of the Australasian Institute of Mining and Metallurgy ("AusIMM") and is a Competent Person as defined in the Joint Ore Reserves Committee (JORC) of the AUSIMM, with over 20 years experience in the minerals industry including the activity reported. This person consents to the inclusion of this information in the form and context in which it appears in this report.

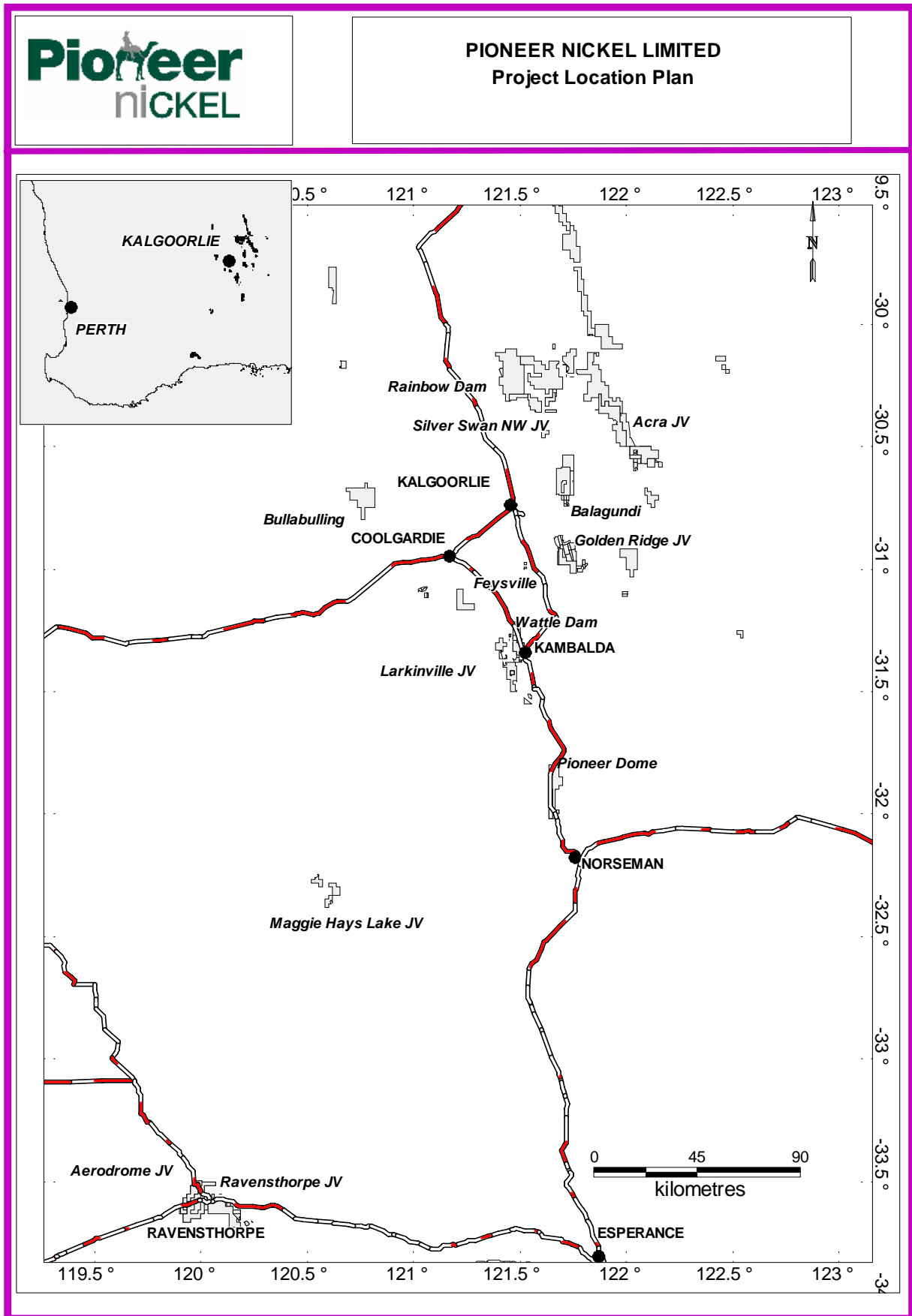


Figure 1. Pioneer Nickel Limited Project Location Plan.

Pioneer Nickel Limited
 September 2007 Quarterly Report – Operations Summary

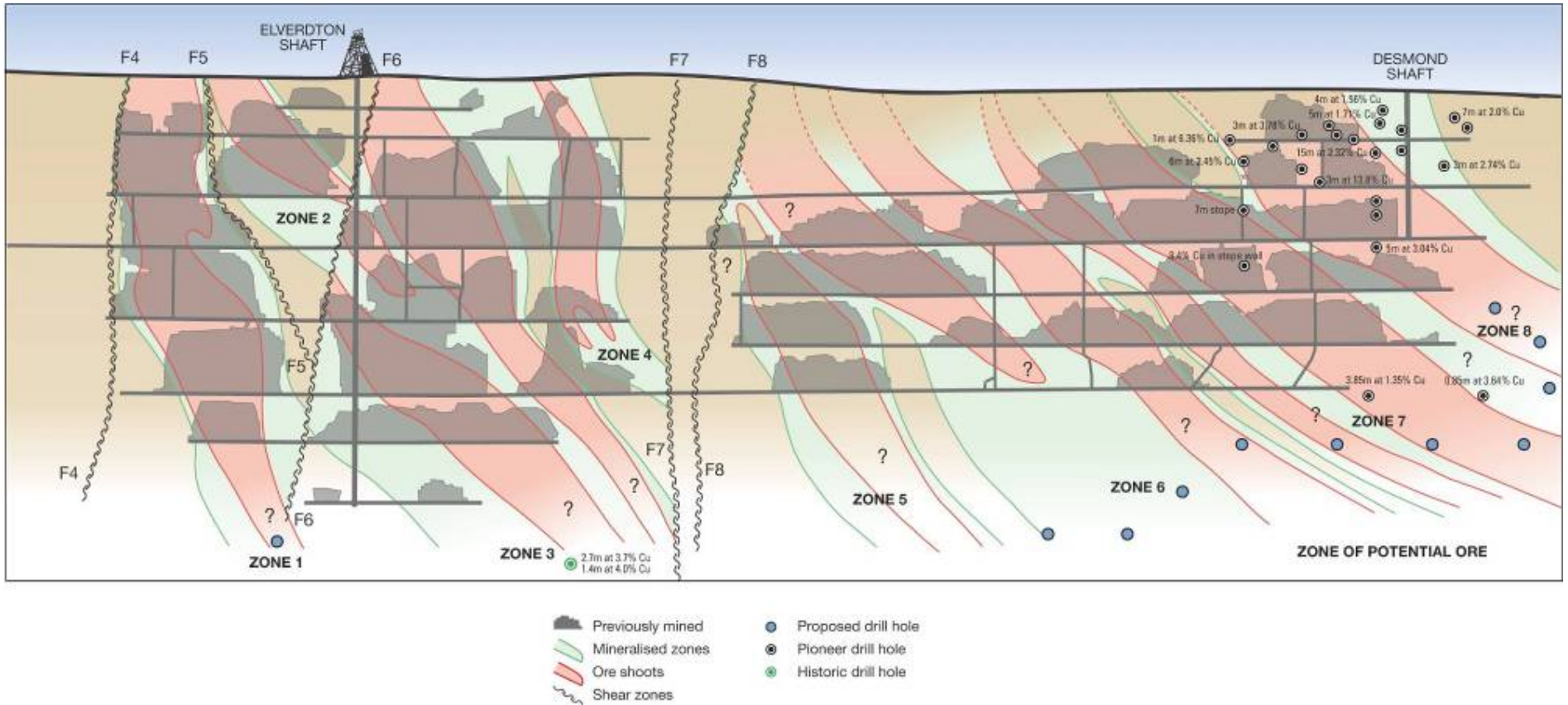


Figure 2. Long section of the Mt Desmond-Elverdton Mine Workings, showing proposed drill holes.

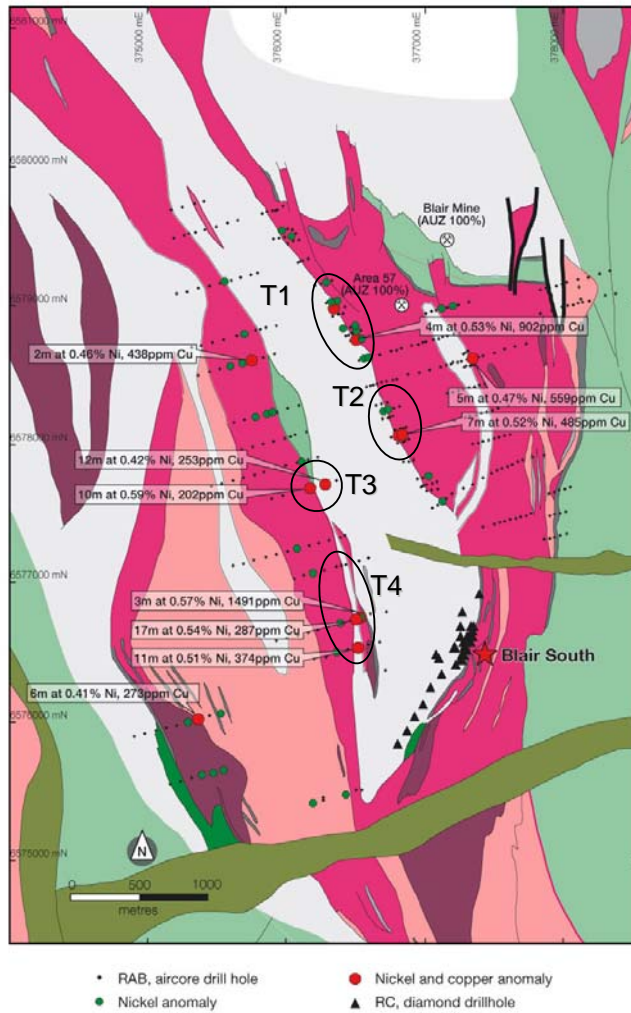


Figure 3. Golden Ridge Project showing RAB and aircore drill hole locations, with significant intercepts and new targets shown.

For more detailed information please see below or contact;

Released by:
 Katherine Knox
 Consultant
 Porter Novelli
 T: 61 8 9386 1233
 E: kknnox@wa.porternovelli.com.au

On Behalf of:
 David Crook
 Managing Director
 Pioneer Nickel Limited
 T: 61 8 9322 6974

Or visit: www.pioneernickel.com.au